

CATALOG #	TYPE	
JOB NAME	WATTAGE	VOLTAGE

SmartLED™ MRI Lighting System

4" Open Appearance Downlight

Up to 60,000 Hour Life • Type IC

LM-80 Qualified • LM-79 Certified Photometry

Specifications

Delivered System Performance

- Lumens: **-2500L** (35W); 2500 nominal lumens
- Distribution: MFL standard; optional: -SPT, or -NFL
- Color temperature: 3500°K standard; optional: -27K, -30K, -41K, or -50K
- CRI: 80+ standard; optional: -HC (90+)
- 60,000 hour life (L70)
- Fully sustainable: removable for servicing

Thermal Management System

- Aluminum heat sink and components for cool operation, long life, and low maintenance

SmartLED™ MRI Lighting System Required

- Kirlin remote driver modules, cabinet, and RFI filters required for operation
- Components ordered separately, see below for driver information and **MRI-CABNT** for additional components
- SmartLED driver modules provide 0-10V dimming to 0.38%

SmartLED™ Emergency Backup System

- **EMI-21220** or **EMI-03120** available for emergency power
- See specification sheet; order separately

Trim and Lens Assembly

- Clear specular aluminum self-flanged, low glare cone with lens above
- Optional colors and finishes available

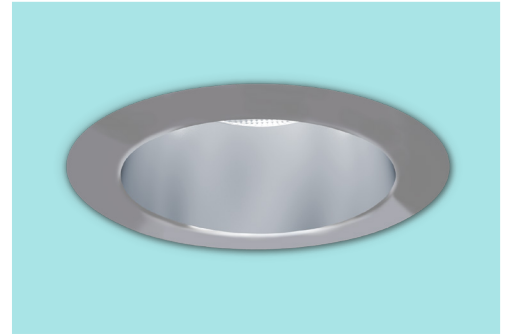
Acrylic Enameled Aluminum Housing

- Rustproof and corrosion resistant: exceeds 1000 hour ASTM 5% salt spray test; all components fully sustainable
- Shallow depth for restricted plenums
- Cool operation extends component life
- Modular design; visible and fully serviceable through aperture
- Built-in plaster flange

Outlet Box (Aluminum)

- UL listed J-box; prewired with ½" knockouts

MRR-04414



Installation & Hardware

- Requires minimum 18 AWG twisted pair shielded wire from SmartLED™ MRI Lighting System to fixtures
- Recesses in ceilings up to 1-1/8" thick or see Option -79
- Aluminum 27" hanger bars with adjustable mounting brackets (2) supplied.

UL, C-UL (Canada) Listings

- Wet, damp or dry locations, covered ceilings
- Type IC: for direct contact with insulation

IEC & FCC Compliance

- FCC Part 15 certified for EMI/RFI emissions

FIVE YEAR Limited Warranty

- Complete fixture, must be installed with all SmartLED™ components

Options and Ordering Configuration

(Example: MRR-04414-2500L-30K-NFL)

Made in the USA
BABAA Compliant

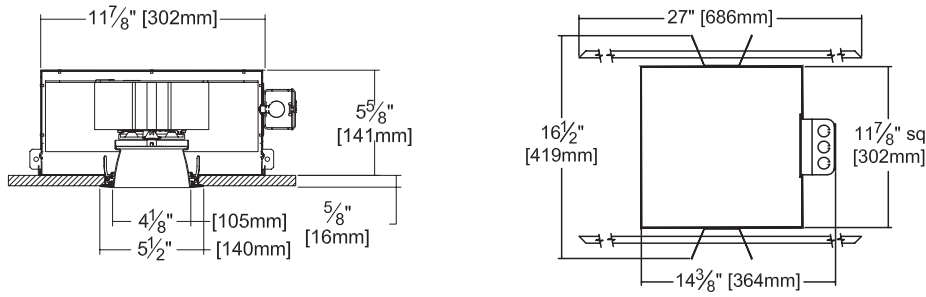
BioGard™
See Option -BGT

FCC Part 15
Certified

UL Listed
Wet, Damp, Dry

Must Specify		Optional			
Model	Lumens	CCT & CRI	Beam	Trim & Lens Options	Other Options
MRR-04414	-2500L	(Blank): 35K, 80+ CRI 80+ CRI -27K: 2700°K -30K: 3000°K -35K: 3500°K -41K: 4000°K -50K: 5000°K 90+ CRI -27K-HC: 2700°K -30K-HC: 3000°K -35K-HC: 3500°K -41K-HC: 4000°K -50K-HC: 5000°K	(Blank): MFL -SPT -NFL -MFL	(Blank): Clear specular aluminum self-flanged downlight cone with lens above Trim Finishes -30T: All white acrylic enameled cone -30F: White acrylic enameled cone flange -70T: SofTex™ semi-specular clear self-flanged cone -94: Custom color; consult factory -BGT: BioGard™ anti-microbial white Other Trim Features -32: White trim extender, specify OD -45: Gasket between trim flange and ceiling Lens Options -23: Frosted microprismatic lens instead -WA: White acrylic (flat) diffuser instead; will produce wide flood distribution	(Blank): None Mounting -79: Extension collar; ceilings up to 2" thick Other Options -99: Special modification; consult factory

Dimensions



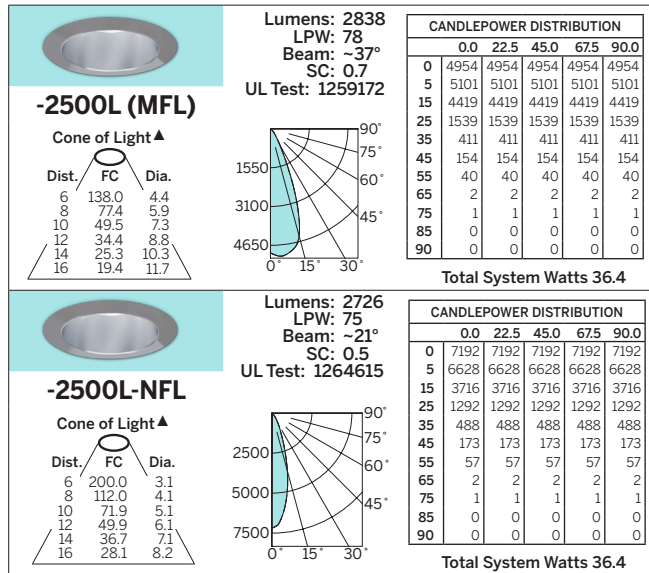
Ceiling Cut-out
5" Dia.

Photometry - Installed Complete Fixture

LM-79 IESNA Certified Photometry from Independent Lab

Photometry from UL Verification Services, Allentown, PA

▲ **Cone of Light Key**
 Dia. (in ft.) shown is where FC value is half the FC at nadir.
Dist. Distance (Ft.) from fixture
FC Footcandles at nadir (0°)
Dia. Circle of light at 50% of FC



*LED manufacturers maintain a tolerance of +/-7% on flux (lumens) and power (electrical) measurements.

SmartLED™ MRI Driver Modules

Fully Digital Controlled Power Source for LED Luminaires

Mounted in Kirlin's **MRI-CABNT**

Drivers wired in series



Driver Module	Maximum Capacity	Fixture Load Example
DVR-1400A	Qty 1: 2500L Luminaire	• Qty 1: MRR-04414-2500L
DVR-1400B	Up to Qty 2: 2500L Luminaire	• Qty 2: MRR-04414-2500L • Qty 1: MRR-04414-2500L and Qty 1: MRR-04416-2500L

LIMITED WARRANTY: CATALOGED KIRLIN FIXTURES ARE WARRANTED FREE OF DEFECTS IN WORKMANSHIP OR MATERIAL FOR THE PERIOD OF PURCHASE. INSTALLATION, MAINTENANCE, REPAIR, OR REPLACEMENT OF THE FIXTURE SHALL BE THE RESPONSIBILITY OF THE USER. THE WARRANTY SHALL BE VOID IF THE FIXTURE IS NOT INSTALLED OR MAINTAINED IN ACCORDANCE WITH THE INSTRUCTIONS PROVIDED WITH THE FIXTURE. THE WARRANTY SHALL BE VOID IF THE FIXTURE IS USED IN AN APPLICATION NOT INTENDED BY THE MANUFACTURER. THE WARRANTY SHALL BE VOID IF THE FIXTURE IS REPAIRED OR MODIFIED BY ANY OTHER PARTY. THE WARRANTY SHALL BE VOID IF THE FIXTURE IS USED IN AN APPLICATION NOT INTENDED BY THE MANUFACTURER. THE WARRANTY SHALL BE VOID IF THE FIXTURE IS REPAIRED OR MODIFIED BY ANY OTHER PARTY.

SmartLED MRI
OCTOBER 2024