

High Efficiency Ellipsoidal  
"Pulse Start" Lamp  
Downlight: 150 Watt



6" 150W HRR-06200

# THIS PRODUCT IS NO LONGER AVAILABLE

Please consult **QUOTATIONS** for the best alternative.

**Features**

**Lamp**

- Designed for metal halide T-6 bi-pin.
- See chart below for standard and optional wattages.
- See Option -43 and chart below for lower wattage of HPS availability.

**Socket**

- Pulse rate, Silicone leads. Porcelain.
- T-6: G12 bi-pin. Horizontal.

**Reflectors**

- Upper: Ellipsoidal specular Alzak® aluminum.
- Lower: High efficiency parabolic Alzak aluminum, self-flanged.
- Fourteen optional lower reflector cones.

**Lens**

- UV absorbing tempered MicroLex® glass mounted to upper reflector. Also see Options.

**Lamp Assembly, Specialty Voltage**

- This product™ is designed for 180 volt, 60 Hz. pulse start ballast.
- 39-100 watt, Class M, high reactance for 120 volt, Options -65, -66; reactor for 277 volt.
- Capacitor and ignitor supplied.
- Dimming (-39) and electronic (-96) ballasts available. See Options.

- Cool, quiet, long-life. Silicone leads.
- Mounts and easily removed from ceilings including dry wall.

**Fuse**

- 5A, 1/4" x 1/4" (1/2" long) for 30 amp.

**Housing**

- Anodized aluminum, 1/2" deep, 1/2" wide across entire surface area. Ventilated.
- Rustproof. Exceeds 100-hour ASTM 5% salt water test.

- Entire luminaire serviced from below through removable reflectors.
- Built-in plaster name.

**Outlet Box**

- Prewired 14 Gauge (NEC) galvanized steel, UL listed; with removable insulated cover.
- 1/2" and 3/4" knockouts.

**Installation**

- 27" galvanized hanger bars supplied (2).
- Fully adjustable universal mounting brackets supplied (2).
- Recesses indoor or outdoor in covered locations.

**UL, C-UL (Canada) Listings**

- UL, C-UL (Canada) listed.
- Through-branch circuit conductors (6 #12).

**Three Year Limited Warranty**

- Complete standard fixture, including ballast.

**Thermal Protection**

- Exceeds 100-hour NEBS.

**Wattage Availability and Cut-Out Dimensions**

Catalog No.	Lamp/Base	Standard Wattage Pulse MH	-24 (HPS)	Option -43: Lower Wattage Pulse MH	-24 (HPS)	Max. Standby Wattage (-49-65-66-LS)	Ceiling Cut-Out Diameter
HRR-06200	T-6/G12 bi-pin	150	—	39-70	—	100	6.5"

**Options**

**Sources and Ballasts**

- 24 HPS ballast instead. See wattage chart above for available wattages. Specify voltage.
- 39 Electronic dimming ballast instead, for pulse start metal halide. Consult factory for wattage and voltage availability.
- 96 Regulating electronic MH ballast instead. Consult factory for availability in 175W or above.

**Wattage and Voltage**

- 43 Lower wattage: See Option -43 chart above for available lower wattages. Specify voltage.
- 120 120 volt, 60 Hz. ballast.
- 277 277 volt, 60 Hz. ballast.
- 347 347 volt, 60 Hz. ballast. Consult factory for dimming or electronic.
- 97 Other voltage ballast instead. Consult factory.

**Relays, Standby, Lamps (see chart)**

- 49 Extra circuit DCB socket. Do not energize simultaneously with main source. Also see -LS.
- 65 Electronic standby system and DCB socket.

- Following HID outage, provides immediate light until HID restrikes. Also see -66 and -LS.
- 66 Electronic time delay standby system and DCB socket. Following outage, provides light until HID reaches 70% output. Also see Option -LS.
- LP With lamp. Specify source, wattage, color temperature, and clear or coated. Consult factory for color temperatures.
- LS With T-4 DCB tungsten halogen standby lamp. Use only with Options -49, -65 or -66.

**Reflectors and Trims (Self-Flanged)**

- 16 Champagne specular Alzak cone. (CP x .95)
- 30 All White lower cone. (CP x .95)
- 31 White flange (only) on lower cone.
- 32 Trim extender. Broadens trim flange O.D. by 1".
- 45 Gasket above lower reflector flange.
- 63 Dune specular Alzak lower cone. (CP x .93)
- 69 Wheat specular Alzak lower cone. (CP x .92)
- 70 SofTex Clear etched lower cone. (CP x .92)
- 71 SofTex Dune etched lower cone. (CP x .89)
- 72 Black specular Alzak lower cone. (CP x .77)
- 77 SofTex Pewter etched lower cone. (CP x .85)

- 90 SofTex Champagne etched cone. (CP x .90)
- 91 SofTex Wheat etched lower cone. (CP x .88)
- 92 Umber specular Alzak lower cone. (CP x .83)
- 93 Pewter specular Alzak lower cone. (CP x .88)
- 94 Custom color lower reflector. Consult factory.
- OG OptiGroove black seamless tapered aluminum lower reflector. White trim. (CP x .75)

**Lenses**

- 15 Prismatic flat C#73 glass instead.
- 28 UV absorbing clear tempered glass instead.

**Mounting Options**

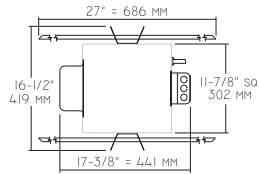
- 79 Extension collar for up to 2" thick ceilings.
- 82 Sloped ceiling adapter, with mounting hardware. Specify 5° increments up to 30°.

**Other Options**

- 99 Special modification. Consult factory.

### HRR-06200

Plan View



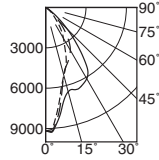
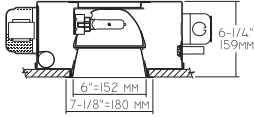
#### Cone of Light Key

- Ft.** Distance from fixture
- FC** Footcandles (average)
- Dia.** Circle of light at 50% of FC
- \* Dia. (in ft.) shown is where FC value is half the FC at nadir.

SC = Spacing Criteria

C.U. (Coefficients of Utilization) Tables are available on request. Please contact your Kirlin representative.

### HRR-06200 150W



Cone of Light\*

Ft.	FC	Dia.
6	254.7	4.5
8	143.3	5.9
10	91.7	7.4
12	63.7	8.9
14	46.8	10.4
16	35.8	11.9

### HRR-06200

- 0° SC 0.6
- 90° SC 1.0
- 180° SC 0.6

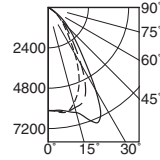
**EFFIC: 64.8%**

**ITL TEST #53647**

\*LER = 46.6 \*AEC = \$5.15

CANDLEPOWER DISTRIBUTION					
	0.0	45.0	90.0	135.0	180.0
0	9170	9170	9170	9170	9170
5	8310	8671	8779	8687	8595
15	5227	6124	6484	5981	5211
25	3435	5278	6392	5311	4138
35	1960	4063	5320	4155	2982
45	787	1717	2295	1675	1340
55	268	427	503	410	352
65	17	17	25	17	17
75	0	0	0	0	0
85	0	0	0	0	0
90	0	0	0	0	0

### HRR-06200-15



Cone of Light\*

Ft.	FC	Dia.
6	170.2	6.9
8	95.7	9.2
10	61.3	11.4
12	42.5	13.7
14	31.3	16.0
16	23.9	18.3

- 0° SC 1.0
- 90° SC 1.2
- 180° SC 1.1

**EFFIC: 63.1%**

**ITL TEST #53648**

\*LER = 45.4 \*AEC = \$5.29

CANDLEPOWER DISTRIBUTION					
	0.0	22.5	45.0	67.5	90.0
0	6127	6127	6127	6127	6127
5	6233	6206	6132	6183	6183
15	5898	6501	6467	6585	6166
25	4306	5806	7305	6065	5278
35	2178	3309	3678	3418	2714
45	1106	1463	1734	1466	1324
55	436	553	620	511	486
65	17	34	25	25	34
75	0	0	0	0	0
85	0	0	0	0	0
90	0	0	0	0	0

LIMITED WARRANTY: CATALOGED KIRLIN FIXTURES ARE WARRANTED FREE OF DEFECTS IN WORKMANSHIP OR MATERIAL FOR THREE YEARS FROM DATE OF PURCHASE. INSTALL TO N.E.C. IN NORMAL USE. Manufacturer at this option will replace or repair such fixture or refund the purchase price on presentation of proof of purchase and defective fixture at the office of manufacturer within three years of original shipment. Liability of manufacturer is limited to the foregoing and manufacturer shall not be liable for any other damages, direct or indirect, sustained or suffered by or for repair, or modification of the fixture without prior written authorization from the manufacturer. This warranty shall not apply to any other Kirlin products. Kirlin Lighting, Inc. 2009

\* LER (Luminaire Efficacy Rating) =  $\frac{\text{Luminaire Effic.} \times \text{Total Lamp Lumens} \times \text{Ballast Factor}}{\text{Input Watts}}$

\* AEC = Annual Energy Cost per 1000 lumens (based on 3000 hours use @ \$0.08 KWH).

### SUBMITTAL DATA

### APPROVAL STAMP

JOB NAME

TYPE

WATTAGE

VOLTAGE

CATALOG NUMBER