

PAR 56 Adjustable Cylinder

Features

Lamp / Socket Assembly

- Designed for:
 - 500 watt (max.) PAR 56 tungsten halogen lamp; dimmable (by others).
- Tilts 90° for relamping.
- Safety tempered clear flat glass provided.
- Optional safety tempered prismatic C#73 flat glass converts oval beam pattern to round. See Option -15 (for use with medium flood lamp).
- Rated 4000 hour life; 100 CRI.
- Swivels 358° and tilts up to 30°.
- Porcelain mogul end-prong socket.

Reflector

- Self-flanged Parabolic specular Alzak® aluminum.
- Eleven optional self-flanged colors and finishes available. See Options.

Housing

- Seamless, deep-drawn rigid aluminum. No visible hardware.

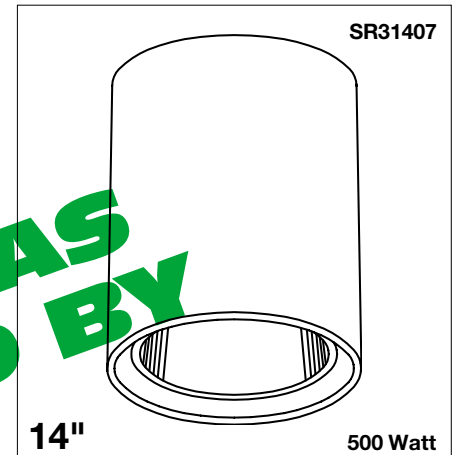
- White acrylic enameled finish standard. See Options for other colors.
- Rustproof: Exceeds 1000 hour ASTM 5% salt spray test.
- Cool: Dissipates heat across entire surface area.

Installation

- Center point mounting with snug fit to ceiling. Mounting hardware furnished.
- Indoor or outdoor for covered ceiling use. (See Option -89 for use with -PM or -WB)
- Pendant mount available. (Option -PM)
- Wall bracket available. (Option -WB)
- **UL, C-UL (Canada) Listings**
- Wet, damp or dry locations, covered ceilings. (See Option -89)
- Caution: Use 90°C supply wire to outlet box above.

Three Year Limited Warranty

- Complete standard fixture



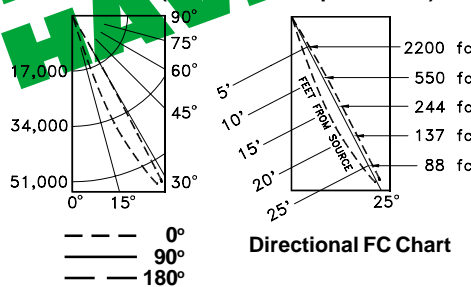
**Airport, Atrium, Church or Mall
Pendant or Wall Bracket
Mount Available
11 Optional Reflector Finishes**

Performance at a Glance

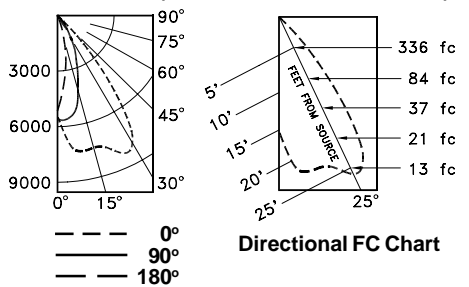
SR31407



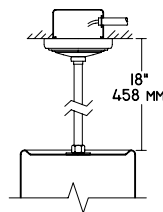
SR31407 (500W Narrow Spot Shown)



SR31407-15 (500W Medium Flood Shown)

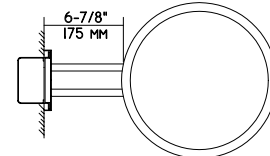


PHOTOMETRIC DATA SHOWN AT 25° TILT



Representative Views:

(Right) Optional wall bracket (Option -WB)
(Left) Optional pendant mount (Option -PM)



THE KIRLIN COMPANY

3401 EAST JEFFERSON AVENUE • DETROIT, MICHIGAN 48207-4232
(313) 259-6400 • Fax: (313) 259-9409 OR (313) 259-3121 • www.light-link.com/kirlin

LAMP

MAXIMUM WATTAGE

CATALOG NUMBERS

PRECISION LIGHTING
TUNGSTEN HALOGEN

PAR 56

500

SR31407

THE KIRLIN COMPANY RESERVES THE RIGHT TO CHANGE, WITHOUT NOTICE, DETAILS OR SPECIFICATIONS IN PRODUCT DESIGN.

Alzak® is a registered trademark of ALCOA.

SR31407

SURFACE ROUND: 500 WATT (MAX.) PAR 56 TUNGSTEN HALOGEN ADJUSTABLE

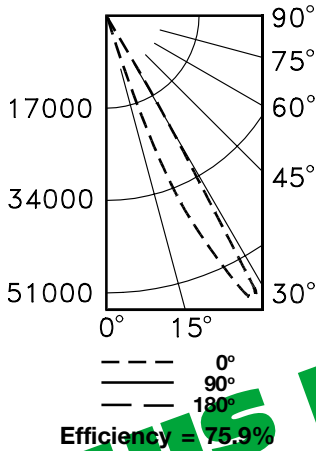
Detailed Photometry - Installed Fixture

FROM I.T.L. (BOULDER, CO) SR31407 (500W NSP): TEST #43326
 SR31407-15 (500W MFL): TEST #43324

SR31407 500W NSP

CANDLEPOWER DISTRIBUTION

COEFFICIENTS OF UTILIZATION



	0.0	30.0	60.0	90.0	180.0
0	920	920	920	920	920
5	1041	1020	968	916	812
15	4476	1988	1072	833	770
25	5025	18571	1114	802	83
35	2290	3737	2186	1530	708
45	104	62	42	42	62
55	21	19	19	19	19
65	0	0	0	0	0
75	0	0	0	0	0
85	0	0	0	0	0
90	0	0	0	0	0

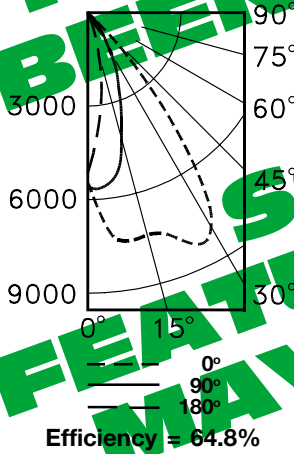
RF	20						
	80			50			
RC	70	50	30	10	50	30	10
1	86	84	82	80	79	78	76
2	81	77	74	71	74	71	69
3	77	72	68	64	69	65	63
4	72	66	62	58	64	60	57
5	68	61	57	53	59	55	52
6	64	57	52	48	55	51	48
7	60	53	48	44	51	47	44
8	57	49	44	41	48	43	40
9	54	46	41	37	44	40	37
10	50	42	37	34	41	37	34

DATA SHOWN AT 25° TILT

SR31407-15 500W MFL

CANDLEPOWER DISTRIBUTION

COEFFICIENTS OF UTILIZATION



	0.0	30.0	60.0	90.0	180.0
0	5537	5537	5537	5537	5537
5	7143	6974	6328	5375	3213
15	7495	6732	5270	3683	764
25	8366	5929	3401	2055	260
35	5880	4346	1708	1008	938
45	873	907	344	288	383
55	60	70	61	65	69
65	2	3	5	8	6
75	0	1	3	3	0
85	0	0	1	1	0
90	0	0	0	0	0

RF	20						
	80			50			
RC	70	50	30	10	50	30	10
1	73	72	70	68	68	66	65
2	70	66	64	61	63	61	59
3	66	62	58	56	59	56	54
4	62	57	54	51	55	52	50
5	59	53	49	47	52	48	46
6	56	50	46	43	48	45	43
7	53	47	43	40	45	42	39
8	50	44	40	37	43	39	37
9	48	41	37	35	40	37	34
10	45	39	35	32	38	35	32

DATA SHOWN AT 25° TILT

Estimated Multipliers

-16 Champagne Gold Alzak®: CP x .98	-69 Wheat Alzak: CP x .97	-90 SofTex Champagne Gold: CP x .86
-30 White: CP x .98	-70 SofTex Clear: CP x .98	-91 SofTex Wheat: CP x .95
-63 Dune Alzak: CP x .97	-71 SofTex Dune: CP x .95	-93 Pewter Alzak: CP x .95
	-72 Black Alzak: CP x .80	-OG Black OptiGroove: CP x .82

Options

- 15 Safety tempered prismatic C#73 flat glass for use with medium flood lamp. See Option -LP
- 16 Champagne Gold specular Alzak® self-flanged reflector. (CP x .98)
- 30 All white reflector, self-flanged. (CP x .98)
- 31 White flange (only) on self-flanged reflector.
- 35 Silver enameled luminaire finish instead.
- 36 Gold enameled luminaire finish instead.
- 37 Dark Bronze enameled luminaire finish instead.
- 38 Black enameled luminaire finish instead.
- 63 Dune specular Alzak self-flanged reflector. (CP x .97)
- 69 Wheat specular Alzak self-flanged reflector. (CP x .97)
- 70 SofTex Clear self-flanged reflector. (CP x .98)
- 71 SofTex Dune self-flanged reflector. (CP x .95)
- 72 Black specular Alzak self-flanged reflector. (CP x .80)
- 80 2" extension collar for mounting luminaire beneath surface outlet box. Finish matches housing color.
- 87 Custom -PM length. Specify up to 4 feet or consult factory. Use with Option -PM.
- 88 Swivel canopy for sloped ceilings up to 45°. Earthquake rated. Use with Option -PM.
- 89 Sealed top WeatherCap feature prevents moisture and insect intrusion from above in outdoor or high humidity areas. Use with Option -PM or -WB.
- 90 SofTex Champagne Gold self-flanged reflector. (CP x .96)
- 91 SofTex Wheat self-flanged reflector. (CP x .95)
- 93 Pewter specular Alzak reflector. (CP x .95)
- 94 Specular or SofTex custom color / finish self-flanged reflector or luminaire. Specify parts. Consult factory.
- 99 Special modification. Consult factory.
- LP With lamp. Specify wattage, beam spread, style (PAR 56) and color temperature. With medium flood, also select Option -15.
- OG OptiGroove black seamless tapered aluminum reflector. White trim, self-flanged. (CP x .82)
- PM Pendant mount instead. 3/8" T.S. x 18" or see Option -87. Also see Options -88 and -89.
- WB Wall bracket mount instead. Also see -89.

SUBMITTAL DATA

APPROVAL STAMP

JOB NAME _____

TYPE _____

WATTAGE _____ VOLTAGE _____

CATALOG NUMBER _____

LIMITED WARRANTY: CATALOGUED KIRLIN FIXTURES ARE WARRANTED FREE OF DEFECTS IN WORKMANSHIP OR MATERIAL FOR THREE YEARS FROM DATE OF PURCHASE. INSTALLATION, E.C., IS NORMAL USE. Manufacturer at this option will replace or repair such fixture or refund the purchase price on presentation of proof of purchase and defective fixture at the office of manufacturer within the first year of original shipment. Liability of manufacturer is limited to the foregoing, and manufacturer shall not be liable for any other damages, direct or indirect, sustained or suffered by purchaser or any person. This warranty is supplied for the fixture placed at other than the office of manufacturer as expressed or implied. Seller does not warrant as to merchantability or fitness for a particular use, nor liability or statement constitute a warranty or amend the specific warranty. Abnormal use, abuse of fixture, improper installation, or repair, or modification of the fixture without prior written authorization from the manufacturer will void the warranty.