

Regressed Lens: Interior or Exterior

Features

Lamp

- 100 watt coated E/ED-17 universal.
- See Option -43 for optional lower wattage.
- Option -23 for Mercury, Option -24 for HPS.

Socket

- Horizontal. Medium base. Pulse rated.
- Glazed porcelain.
- Nickel-plated brass screw shell. Silicone leads.

Reflector

- GlasSurfaced™ multi-faceted specular aluminum.

Trim Assembly

- Tapered black OptiGroove with white flange.
- Self-flanged trim.
- UV absorbing tempered low brightness prismatic glass.
- Torsion springs retain snug fit to ceiling.
- Optional tempered Fresnel lens available (Option -FR).

Ballast Assembly

- WhisperPack™ fully encapsulated 180°C rated HPF ballast.
- Premium Class II; high reactance with 5:12 regulation.
- Capacitor and ignitor supplied.
- 120 volt standard or see optional voltages.

- Cool, quiet, long-life. Silicone leads.
- Visible and easily serviced in all ceilings including dry wall.

Fuse

- Fused primary. Renewable. Aids servicing.

Housing

- Acrylic enameled aluminum.
- Cool. Dissipates heat across entire surface area.
- Rustproof: Exceeds 1000 hour ASTM 5% salt spray test.
- Entire luminaire serviced through removable trim assembly.
- Built-in plaster frame.

Outlet Box

- Prewired 14 GA (NEC) galvanized steel, UL listed.

- Removable insulated cover.
- 1/2" and 3/4" knockouts.

Installation

- 27" galvanized channel bar hangers supplied (2).
- Fully adjustable universal mounting brackets supplied (2).
- Recesses indoor or outdoor in covered locations.

UL Listing

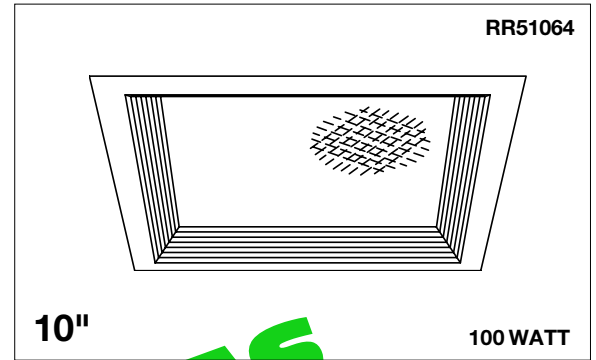
- Wet, damp or dry locations, covered ceilings.
- Through-branch circuit conductors (6 #12).

Three Year Limited Warranty

- Complete standard fixture.

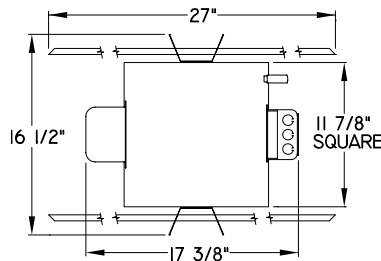
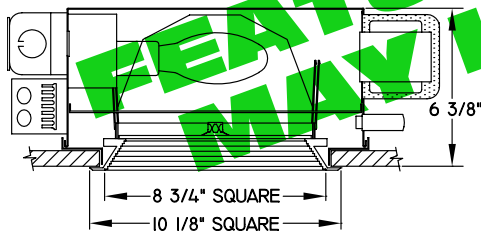
Thermal Protection

- Per current NEC.



Performance at a Glance

RS51064



Cone of Light*

Ft.	FC	Dia.
6	82.3	5.6
8	46.3	7.5
10	29.6	9.3
12	20.6	11.2
14	15.1	13.0
16	11.6	14.9

RS51064

Cone of Light*

Ft.	FC	Dia.
6	98.4	6.0
8	55.4	8.0
10	35.4	10.0
12	24.6	12.0
14	18.1	14.0
16	13.8	15.9

RS51064-FR

Cone of Light Key

- Ft.** Mounting height
- FC** Footcandles
- Dia.** Circle of light at 50% of FC

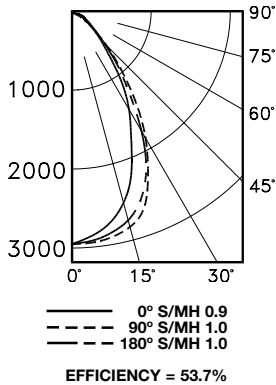
* Dia. (in ft.) shown is where FC value is half the FC at nadir.

THE KIRLIN COMPANY

3401 EAST JEFFERSON AVENUE • DETROIT, MICHIGAN 48207-4232
(313) 259-6400 • Fax: (313) 259-9409 OR (313) 259-3121

Detailed Photometry - Installed Fixture

RS51064



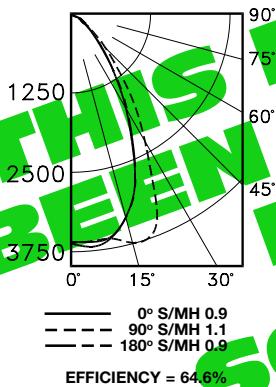
CANDLEPOWER DISTRIBUTION

	0.0	45.0	90.0	135.0	180.0
0	2963	2963	2963	2963	2963
5	2888	2907	2956	2958	2938
15	2488	2660	2861	2833	2705
25	1791	2217	2298	2483	2119
35	1024	1446	1410	1655	1227
45	433	710	614	794	490
55	196	268	261	298	211
65	112	117	118	119	105
75	49	46	52	42	46
85	0	1	1	1	0
90	0	0	0	0	0

COEFFICIENTS OF UTILIZATION

RF	20							
	80			50				
	RW	70	50	30	10	50	30	10
1	60	58	57	55	55	54	53	
2	57	53	51	49	51	49	47	
3	53	49	46	43	47	44	42	
4	50	45	41	39	43	40	38	
5	47	41	38	35	40	37	34	
6	44	38	34	32	37	34	31	
7	41	35	32	29	34	31	29	
8	39	33	29	27	32	29	28	
9	38	31	27	25	30	27	25	
10	35	29	25	23	28	25	23	

RS51064-FR



CANDLEPOWER DISTRIBUTION

	0.0	45.0	90.0	135.0	180.0
0	3543	3543	3543	3543	3543
5	3564	3580	3560	3586	3655
15	3278	3476	3744	3408	3270
25	2264	3205	2928	3143	2211
35	1243	1851	1677	1860	1127
45	460	847	651	820	364
55	192	291	229	281	164
65	114	109	105	107	86
75	51	44	48	38	35
85	0	0	0	0	0
90	0	0	0	0	0

COEFFICIENTS OF UTILIZATION

RF	20							
	80			50				
	RW	70	50	30	10	50	30	10
1	73	71	69	67	67	65	64	
2	69	65	62	59	62	59	57	
3	64	60	56	53	57	54	52	
4	60	55	51	48	53	49	47	
5	57	51	46	43	49	45	43	
6	54	46	43	40	46	42	39	
7	51	44	39	36	42	39	36	
8	48	41	37	34	40	36	33	
9	45	38	34	31	37	34	31	
10	43	36	32	29	35	31	29	

Distribution curves and S/MH data shown are 90° to lamp axis.

Options

- 23 Mercury ballast instead. 100ME standard or see Option -43. Specify voltage.
- 24 HPS ballast instead. 100ME standard or see Option -43. Specify voltage.
- 27 Clear 1/4" tempered glass beneath prismatic flat lens, for vandal resistance.
- 29 White Son ballast instead. For ED-17 medium base lamp. 100 watt standard in 120 volt only. Consult factory for 277V.
- 40 White grooveless flare trim instead.
- 43 Lower wattage - specify voltage and wattage for: Metal Halide: 70, 50; Mercury: 75, 50; HPS: 70, 50, 35; White Son: 50.
- 45 Gasket above trim flange (between trim and ceiling).
- 46 Gasket between trim and lens.
- 49 Extra circuit DCB socket. (100 watt max.) Must not be energized simultaneously with main source.
- 58 277 volt 60 Hz. ballast instead.
- 65 Relay and DCB socket. (100 watt max.) With fixture energized, provides immediate light during HID outage. Also see Option -66.
- 66 Time delay relay and DCB socket. (100 watt max.) When energized, provides light until HID reaches 70% output.
- 94 Custom color trim assembly. Consult factory.
- 97 Other voltage ballasts. Consult factory.
- 99 Special modification. Consult factory.
- FR Fresnel tempered lens instead. Concentric prisms.
- LP With lamp. Specify source, wattage, color temperature, and clear or coated (3200°K standard for 100MH). Consult factory for other color temperatures.
- LS With tungsten halogen standby lamp. (100 watt max.) Use only with Options -49, -65 or -66.

SUBMITTAL DATA

JOB NAME _____

TYPE _____

WATTAGE _____ VOLTAGE _____

CATALOG NUMBER _____

APPROVAL STAMP

LIMITED WARRANTY: CATALOGED KIRLIN FIXTURES ARE WARRANTED FREE OF DEFECTS IN WORKMANSHIP OR MATERIAL FOR THREE YEARS FROM DATE OF PURCHASE. INSTALLER TO BE RESPONSIBLE FOR PROPER INSTALLATION AND MAINTENANCE. MANUFACTURER'S WARRANTY IS LIMITED TO THE ORIGINAL PURCHASER AND DOES NOT COVER REPAIRS OR REPLACEMENTS. THIS WARRANTY IS VOID IF THE FIXTURE IS USED IN AN UNUSUAL MANNER OR IF IT IS MODIFIED. THE WARRANTY IS VOID IF THE FIXTURE IS USED IN AN AREA WHERE THE AMBIENT TEMPERATURE EXCEEDS 100°F. THE WARRANTY IS VOID IF THE FIXTURE IS USED IN AN AREA WHERE THE HUMIDITY EXCEEDS 80%. THE WARRANTY IS VOID IF THE FIXTURE IS USED IN AN AREA WHERE THE VIBRATION EXCEEDS 0.1g. THE WARRANTY IS VOID IF THE FIXTURE IS USED IN AN AREA WHERE THE AIR POLLUTION EXCEEDS 100µg/m³. THE WARRANTY IS VOID IF THE FIXTURE IS USED IN AN AREA WHERE THE AIR QUALITY INDEX (AQI) EXCEEDS 100. THE WARRANTY IS VOID IF THE FIXTURE IS USED IN AN AREA WHERE THE AIR QUALITY INDEX (AQI) EXCEEDS 100. THE WARRANTY IS VOID IF THE FIXTURE IS USED IN AN AREA WHERE THE AIR QUALITY INDEX (AQI) EXCEEDS 100.