

Recessed Lensed
E-Lamp Offset
50 to 200 Watt



8" 100W
11" 150W

HRS-08170
HRS-11171

**THIS PRODUCT
IS NO LONGER**

AVAILABLE

**Please consult
QUOTATIONS**

for the best alternative.

Features

Lamp

- Designed for medium base metal halide E-lamps. See chart below for standard and optional wattages.
- See Option -43 and chart below for lower wattage or HPS availability.

Socket

- Medium base. Pulse rated. Glazed body.
- Offset horizontal.
- Nickel-plated brass screw shell. Silicone leads.

Reflector

- GlasSurface™ multi-faceted reflector aluminum.

Trim Assembly

- UV absorbing tempered low brightness prismatic finish.
- Rustfree die-formed door and ceiling screw(s). Concealed hinges.

Beverly cast aluminum frame. Polished stainless steel base finish. White acrylic finish. Bore: 1/2" (1.27 cm). 1/2" (1.27 cm) V-ring.

- WhisperPack™ fully encapsulated 180°C rated HPF pulse start ballast.
- 50-150 watt: Class H, high reactance for 120 volt, linear reactor for 277 volt.
- Capacitor and ignitor supplied.
- Finishing (-39) and electrocoat (-66) ballast.
- Case: 1/2" (1.27 cm) Gaskets.
- Cool, quiet, long-life. Silicone leads.
- Visible and easily serviced in all ceilings.
- Fused power. Prevents No-bolt & bolt loosening.
- Acrylic enameled aluminum. Ventilated.
- Cool: Dissipates heat across entire surface.
- Rust-Proof: Exposed to 100% humidity salt spray test.

- Entire luminaire serviced from below through removable reflector.
- Built-in plaster frame.

Outlet Box

- Prewired 14 GA (NEC) galvanized steel, UL listed; with removable insulated cover.
- 1/2" and 3/4" knockouts.

Installation

- 27" galvanized hanger bars supplied (2).
- Fully adjustable universal mounting brackets supplied (2).
- Recesses in floor or outdoor in covered locations.

UL, C-UL (Canada) Listings

- Wet, damp or dry locations, covered ceilings.
- Through-branch circuit conductors (6 #12).

Three Year Limited Warranty

- Complete standard fixture, including ballast.
- 1 Year Protection
- Per current NEC.

Wattage Availability and Cut-out Dimensions

Catalog No.	Lamp/Base	Standard Wattage		Option -43: Lower Wattage		Max. Standby Wattage (-49-65-66-LS)	Ceiling Cut-Out
		Pulse MH	-24 (HPS)	Pulse MH	-24 (HPS)		
HRS-08170	ED-17/Med	100	100	50-70	35-70	100	9.5" Sq.
HRS-11171	ED-17/Med	150	150	50-125	35-100	100	12.25" Sq.

Options

Sources and Ballasts

- 24 HPS ballast instead. See wattage chart above for available wattages. Specify voltage.
- 39 Electronic dimming ballast instead, for pulse start metal halide. Consult factory for wattage and voltage availability.
- 96 Regulating electronic MH ballast instead.

Wattage and Voltage

- 43 Lower wattage: See Option -43 chart above for available lower wattages. Specify voltage.
- 120 120 volt, 60 Hz. ballast.
- 277 277 volt, 60 Hz. ballast.
- 347 347 volt, 60 Hz. ballast. Consult factory for dimming or electronic.
- 97 Other voltage ballast. Consult factory.

Relays, Standbys, Lamps (See Chart)

- 49 Extra circuit DCB socket. Do not energize simultaneously with main source. Also see -LS.
- 65 Electronic standby system and DCB socket. Following HID outage, provides immediate light until HID restrikes. Also see -66 and -LS.
- 66 Electronic time delay standby system and DCB socket. Following outage, provides light until HID reaches 70% output. Also see Option -LS.
- LP With lamp. Specify source, wattage, color temperature, and clear or coated. (3700°K standard for metal halide)
- LS With T-4 DCB tungsten halogen standby lamp. Use only with Options -49, -65 or -66.

Lenses and Trims

- 26 Tamperproof recessed hex, center pin, button door screw with key. One key per ten fixtures. Also see Option -27.

- 27 Clear 1/4" tempered glass beneath tempered prismatic C#73 flat glass lens for added vandal resistance. Also see Option -26.
- 32 Trim extender. Broadens trim flange O.D. by 1".
- 45 Gasket between trim and ceiling.
- 46 Gasket between trim and lens.
- 94 Custom color frame finish instead. Consult factory.
- DG Drop Guard with tempered flat prismatic glass. Galvanized steel. White acrylic finish.
- DH Drop-Holophane tempered lens instead. Not available for HRS-08170.

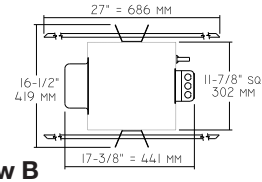
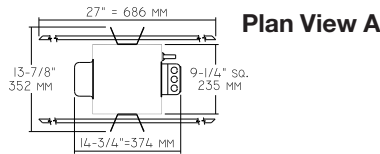
Mounting Options

- 85 Ceiling Panel; with recessed fixture hole. Lays-in 2' x 2' grid. White

Other Options

- 99 Special modification. Consult factory.

HRS-08170
HRS-11171



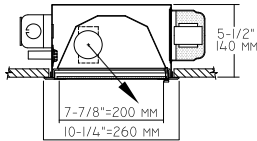
Cone of Light Key

- Ft.** Distance from fixture
- FC** Footcandles (average)
- Dia.** Circle of light at 50% of FC
- * Dia. (in ft.) shown is where FC value is half the FC at nadir.

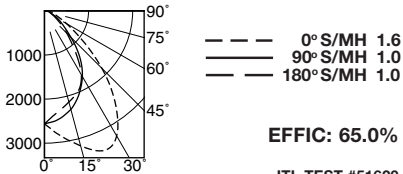
C.U. (Coefficients of Utilization)
Tables are available on request.
Please contact your Kirlin representative.

LIMITED WARRANTY- CATALOGED KIRLIN FIXTURES ARE WARRANTED FREE OF DEFECTS IN WORKMANSHIP OR MATERIAL FOR THREE YEARS FROM DATE OF PURCHASE. INSTALLED TO N.E.C. IN NORMAL USE. Manufacturer at the option will replace or repair, at no charge, the fixture or ballast if found to be defective in workmanship or material. This warranty is void if the fixture is used in an application not intended for such use, or if the fixture is damaged, altered, modified, or if the fixture is not installed in accordance with the instructions. This warranty is not intended to cover consequential damages, direct or indirect, sustained or suffered by purchaser or any person. This warranty is supplied to the buyer in place of all other warranties, expressed or implied. Seller does not warrant as to merchantability or fitness for a particular use, nor will any oral statement constitute a warranty or amend this specific warranty. Abnormal use, abuse of the fixture, improper installation, or modification of the fixture without prior written authorization from the manufacturer will render the warranty void.

HRS-08170 100W (Plan View A)



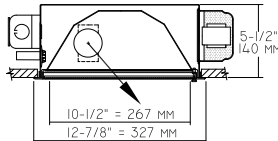
HRS-08170 (Coated Lamp)



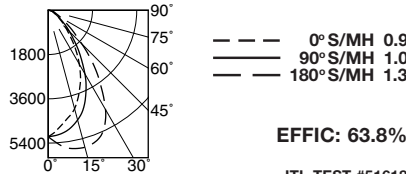
CANDLEPOWER DISTRIBUTION					
	0.0	45.0	90.0	135.0	180.0
0	2560	2560	2560	2560	2560
5	2762	2686	2515	2413	2381
15	3168	2844	2312	2116	2139
25	3444	2877	1939	1749	1906
35	2977	2483	1457	1243	1315
45	1840	1582	848	686	721
55	864	766	463	354	366
65	383	382	238	200	193
75	207	188	121	115	115
85	77	75	41	38	41
90	0	0	0	0	0

OFFSET DISTRIBUTION

HRS-11171 150W (Plan View B)



HRS-11171 (Coated Lamp)



CANDLEPOWER DISTRIBUTION					
	0.0	45.0	90.0	135.0	180.0
0	5142	5142	5142	5142	5142
5	4817	4853	5070	5362	5497
15	4142	4209	4617	5482	5766
25	3113	3268	3634	4872	5340
35	1949	2139	2297	3419	3721
45	1017	1106	1226	1817	1935
55	523	535	578	807	867
65	292	287	272	366	412
75	171	176	169	231	234
85	53	62	53	84	74
90	0	0	0	0	0

OFFSET DISTRIBUTION

* LER (Luminaire Efficacy Rating) = Luminaire Effic. x Total Lamp Lumens x Ballast Factor / Input Watts

• AEC = Annual Energy Cost per 1000 lumens (based on 3000 hours use @ \$0.08 KWH).

SUBMITTAL DATA

APPROVAL STAMP

JOB NAME

TYPE

WATTAGE

VOLTAGE

CATALOG NUMBER