

Recessed Lensed E-Lamp  
Downlights, Top Cap 250 Watt



8" 250W

**HRS-08163**

11" 150W

**HRS-11164**

# THIS PRODUCT IS NO LONGER AVAILABLE

Please consult **QUOTATIONS** for the best alternative.

**Features**

**Lamp**

- Designed for metal halide E-lamps, each with standard and optional wattages.
- See Option -43 and chart below for lower wattage or HPS availability.

**Socket**

- HRS-08163: Vertical. HRS-11164: Horizontal.
- Pulse rated. Glazed porcelain.
- Nickel-plated brass screw shell. Silicone leads.

**Reflectors**

- Upper : Ellipsoidal or parabolic specular Alzak® aluminum.
- HRS-08163: SofTex softly etched polished aluminum. Self-flange.
- HSR-11164: 9 cell semi-specular aluminum parabolic louve.

**Lens: Mounted**

- HRS-08163: UV absorbing clear tempered glass.
- HRS-11164: Prismatic flat C#73 glass.

**Lamp Assembly Specifications**

- Whiteback™ lamp socket, 180° rated, 2000 hour start life.
- 60-100 watt: Class H, high reactance for 120 volt, linear reactor for 277 volt.
- 175-250 watt: Super CWA for 120 volt and Options -65, -66, -HL; Class H, linear reactor for 277 volt.
- Capacitor and ignitor supplied.
- Cool, quiet, long-life. Silicone leads.
- Fused primary. Renewable. Not for 480 volt.

**Housing**

- Rustproof: Exceeds 1000 hour ASTM 5% salt spray test.

- Entire luminaire serviced from below through removable reflector.
- Built-in plaster frame.

**Outlet Box**

- Prewired 14 GA (NEC) galvanized steel, UL listed; with removable insulated cover.
- 1/2" and 3/4" knockouts.

**Installation**

- 27" galvanized hanger bars supplied (2).
- Fully adjustable universal mounting brackets supplied (2).
- Recesses indoor or outdoor in covered locations.

**UL, C-UL (Canada) Listings**

- Wet, damp or dry locations, covered ceilings.
- Through-branch circuit conductors (6 #12).

**Manufacturer's Limited Warranty**

- 1 year standard fixture, including ballast.
- Thermal Protection
- Per current NEC.

**Wattage / Lamp Availability and Cut-out Dimensions**

Catalog No.	Lamp/Base	Standard Wattage		Option -43: Lower Wattage		Max. Standby Wattage (-49-65-66-LS)	Ceiling Cut-Out
		PulseMH	-24 (HPS)	PulseMH	-24 (HPS)		
HRS-08163	ED-28/Mog	250	250	150-200	50-150	150	9.5" Sq.
HRS-11164	ED-17/Med	150	150	50-125	35-100	100	12.5" Sq.

**Options**

**Sources and Ballasts**

- 24 HPS ballast instead. See wattage chart above for available wattages. Specify voltage.
- 39 Electronic dimming ballast instead for pulse start metal halide. Consult factory for wattage and voltage availability.
- 96 Regulating electronic MH ballast instead. Consult factory for availability in 175W or above.

**Wattage and Voltage**

- 43 Lower wattage: See Option -43 chart above for available lower wattages. Specify voltage.
- 120 120 volt, 60 Hz. ballast.
- 277 277 volt, 60 Hz. ballast.
- 347 347 volt, 60 Hz. ballast. Consult factory for dimming or electronic.
- 97 Other voltage ballast. Consult factory.

**Relays, Standbys, Lamps (See Chart)**

- 49 Extra circuit DCB socket. Do not energize simultaneously with main source. Also see -LS.
- 65 Electronic standby system and DCB socket.

- 66 Following HID outage, provides immediate light until HID restrikes. Also see -66 and -LS.
- 66 Electronic time delay standby system and DCB socket. Following outage, provides light until HID reaches 70% output. Also see Option -LS.
- HL Hi-Lo wiring modification for HRS-08163 only. For use with external relay systems (by others). Specify system separately.
- LP With lamp. Specify source, wattage, color temperature, and clear or coated. (3700°K standard for metal halide)
- LS With T-4 DCB tungsten halogen standby lamp. Use only with Options -49, -65 or -66.

**Reflectors and Trims (Self-Flanged) (Consult factory for HRS-11164)**

- 16 Champagne Gold specular Alzak lower reflector. (CP x 1.10)
- 30 All White lower reflector. (CP x 1.10)
- 31 White flange (only) on lower reflector.
- 32 Trim extender. Broadens trim flange O.D. by 1".
- 45 Gasket above reflector flange.
- 62 Clear specular Alzak lower reflector. (CP x 1.16)
- 63 Dune specular Alzak lower reflector. (CP x 1.08)
- 69 Wheat specular Alzak lower reflector. (CP x 1.07)

- 71 SofTex Dune etched lower reflector. (CP x .97)
- 72 Black specular Alzak lower reflector. (CP x .89)
- 77 SofTex Pewter etched lower reflector. (CP x .92)
- 90 SofTex Champagne Gold lower reflector. (CP x .97)
- 91 SofTex Wheat etched lower reflector. (CP x .95)
- 92 Umber specular Alzak lower reflector. (CP x .96)
- 93 Pewter specular Alzak lower reflector. (CP x 1.02)
- 94 Custom color lower reflector instead. Consult factory.

**Lenses**

- 15 Prismatic C#73 flat glass lens instead. (Standard for HRS-11164)
- 28 UV absorbing clear tempered glass instead. (Standard for HRS-08163)
- ML UV absorbing tempered Microlox glass instead.

**Mounting Options**

- 79 Extension collar for up to 2" thick ceilings.
- 85 Ceiling Panel: with recessed fixture hole. Lays-in 2' x 2' grid. White.

**Other Options**

- 99 Special modification. Consult factory.
- TA Top access modification for servicing from above ceiling. Not available for HRS-11164.

PS, MET, HALIDE  
REV APRIL 2009



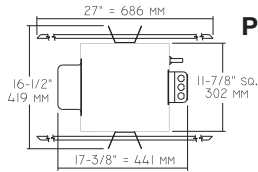
**THE KIRLIN COMPANY**

3401 EAST JEFFERSON AVENUE • DETROIT, MICHIGAN 48207-4232  
(313) 259-6400 • Fax: (313) 259-9409 or (313) 259-3121 • www.kirlinlighting.com

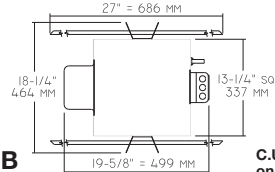
THE KIRLIN COMPANY RESERVES THE RIGHT TO CHANGE, WITHOUT NOTICE, DETAILS OR SPECIFICATIONS IN PRODUCT DESIGN.

Alzak® is a registered trademark of ALCOA.

**HRS-08163**  
**HRS-11164**



**Plan View A**



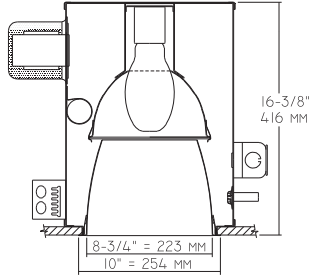
**Plan View B**

- Cone of Light Key**
- Ft.** Distance from fixture
  - FC** Footcandles (average)
  - Dia.** Circle of light at 50% of FC
  - Dia. (in ft.) shown is where FC value is half the FC at nadir.

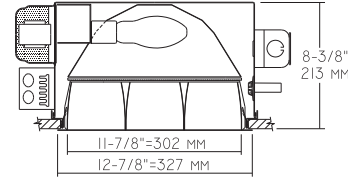
**C.U. (Coefficients of Utilization) Tables are available on request. Please contact your Kirlin representative.**

LIMITED WARRANTY- CATALOGED KIRLIN FIXTURES ARE WARRANTED FREE OF DEFECTS IN WORKMANSHIP OR MATERIAL FOR THREE YEARS FROM DATE OF PURCHASE. INSTALLATION TO N.E.C. IN NORMAL USE. Manufacturer at the option will replace or repair fixture or related the purchase price or representation of proof of purchase and defective fixture at the office of manufacturer within three years of original shipment. Liability of manufacturer is limited to the foregoing, and manufacturer shall not be liable for any other damages, direct or indirect, sustained or suffered by purchaser or any person. This warranty is supplied to the buyer in place of all other warranties, expressed or implied. Seller does not warrant as to merchantability or fitness for a particular use, nor will any oral statement constitute a warranty or amend this specific warranty. Abnormal use, abuse or other improper installation, repair, or modification of the fixture without prior written authorization from the manufacturer will render the Warranty void.

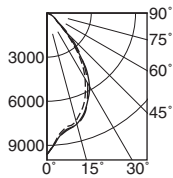
**HRS-08163 250W**  
**(Plan View A)**



**HRS-11164 150W**  
**(Plan View B)**



**HRS-08163 (Coated Lamp)**



**Cone of Light\***

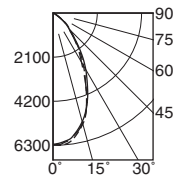
Ft.	FC	Dia.
6	267.1	5.6
8	150.3	7.4
10	96.2	9.3
12	66.8	11.2
14	49.1	13.0
16	37.6	14.9

	CANDLEPOWER DISTRIBUTION				
	0.0	22.5	45.0	67.5	90.0
0	9617	9617	9617	9617	9617
5	8441	8529	8573	8616	8569
15	7589	7681	7864	7912	7812
25	6132	6327	6470	6598	6546
35	4077	4384	4440	4678	4619
45	1640	1935	2170	2066	1776
55	685	585	398	605	709
65	334	271	195	267	334
75	127	100	80	100	127
85	24	16	16	16	16
90	0	0	0	0	0

**EFFIC: 46.9%**

ITL TEST #51811  
\*LER = 35.9  
•AEC = \$6.68

**HRS-11164 (Coated Lamp)**



**Cone of Light\***

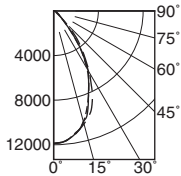
Ft.	FC	Dia.
6	173.7	5.2
8	97.7	7.0
10	62.5	8.7
12	43.4	10.5
14	31.9	12.2
16	24.4	14.0

	CANDLEPOWER DISTRIBUTION				
	0.0	45.0	90.0	135.0	180.0
0	6254	6254	6254	6254	6254
5	6277	6179	6137	6144	6182
15	5467	5397	5351	5386	5411
25	3657	3808	3869	3913	3637
35	2194	2166	2340	2169	2090
45	1145	1026	1109	994	1062
55	517	419	418	379	410
65	126	96	99	85	105
75	37	30	31	27	31
85	5	7	14	5	3
90	0	0	0	0	0

**EFFIC: 54.7%**

ITL TEST #51609  
\*LER = 33.7  
•AEC = \$7.12

**HRS-08163-15 (Clear Lamp)**



**Cone of Light\***

Ft.	FC	Dia.
6	329.9	5.5
8	185.6	7.3
10	118.8	9.2
12	82.5	11.0
14	60.6	12.8
16	46.4	14.7

	CANDLEPOWER DISTRIBUTION				
	0.0	22.5	45.0	67.5	90.0
0	11876	11876	11876	11876	11876
5	11742	11704	11728	11707	11701
15	10296	10414	10486	10410	10268
25	7445	7722	8196	7802	7411
35	4235	4504	4650	4605	4331
45	1266	1384	1664	1418	1266
55	574	491	329	498	588
65	277	214	156	225	284
75	111	83	69	86	104
85	14	14	14	17	21
90	0	0	0	0	0

**EFFIC: 49.1%**

ITL TEST #51812  
\*LER = 39.5  
•AEC = \$6.07

\* LER (Luminaire Efficacy Rating) = Luminaire Effic. x Total Lamp Lumens x Ballast Factor / Input Watts

• AEC = Annual Energy Cost per 1000 lumens (based on 3000 hours use @ \$0.08 KWH).

### SUBMITTAL DATA

JOB NAME

TYPE

WATTAGE

VOLTAGE

CATALOG NUMBER

### APPROVAL STAMP