

CATALOG #	TYPE	
JOB NAME	WATTAGE	VOLTAGE

12" 1 Triple 85 WATT PL-H MAXIMUM

FRV-12135

Architectural Vandal Resistant Downlight
Designed for 85 Watt PL-H

THIS PRODUCT IS NO LONGER AVAILABLE

Features

Lamp

- Designed for one 4-pin Philips PL-H triple tube amalgam compact fluorescent lamp: 85 or 60 watt PL-H.
- Long 20,000 hour life.
- High 6,000 lumen output.
- 800 MA high output lamp current.

Ballast: Multi Voltage

- Installed electronic high power factor, thermally protected.
- 120-277 multi-volt; 50/60 Hz. THD $\leq 10\%$
- Cold weather -22°F (-30°C).
- End of lamp life protection circuit. PFI filter.
- Internally fused. Also see Option -FS.

Reflector

- Specular Alzak® aluminum.

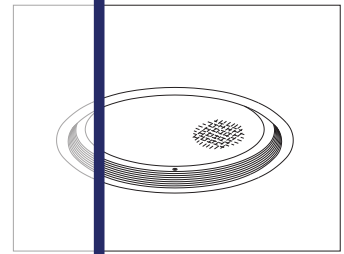
Trim / Lens Assembly

- Vandal resistant tapered aluminum one piece black OptiGroove® with white flange. Also see -40.
- Flush tamper proof screws with captive nuts secure trim to captive nuts in housing.
- Continuous lens and four screws secure lens.

- Lens combines 1/4" thick polycarbonate with prism lens to improve light output.
- Aluminum Housing
 - Acrylic enameled. Rustproof: Exceeds 1000 hours ASTM 5 salt water test.
 - Light weight: 1.5 lbs. (0.7 kg) load.
 - Operates at 100% rated lamp life.
 - Eureka® wire shielded wiring device.
 - Built-in plaster frame.
- Outlet Box
 - Prewired 14 GA (NEC) galvanized steel, UL

Installation

- Pre-galvanized plaster with adjustable mounting brackets (2) supplied.
- Recesses indoor or outdoor in covered locations.
- Through-branch products (6 #12).
- Wet, damp or dry locations, covered ceilings.
- Through-branch products (6 #12).



20,000 Hour Lamp Life
Tamperproof Trim

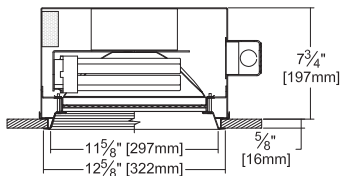
Selected Optional Trim:

- White Grooveless Tamperproof Flare Option -40

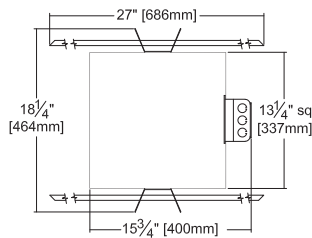
Please consult **QUOTATIONS** for the best alternative.

Performance at a Glance

FRV-12135

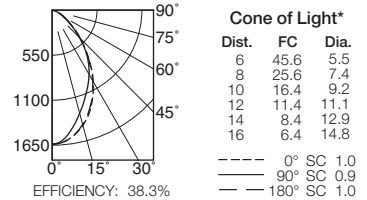


Option -40 Also Shown

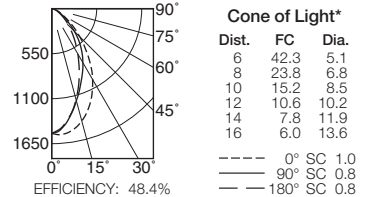


Ceiling Cut-out 12 1/4"

FRV-12135 (1 PL-H 85W)



FRV-12135 (1 PL-H 60W)



Cone of Light Key
Ft. Distance from fixture
FC Footcandles at nadir (0°)
Dia. Circle of light at 50% of FC
* Dia. (in ft.) shown is where FC value is half the FC at nadir.

THE KIRLIN COMPANY

3401 EAST JEFFERSON AVENUE • DETROIT, MICHIGAN 48207-4232
(313) 259-6400 • Fax: (313) 259-9409 OR (313) 259-3121 • www.kirinlighting.com

RENAISSANCE SERIES
COMPACT FLUORESCENT LIGHTING

MAXIMUM WATTAGE

1 PL-H 85

CATALOG NUMBER

FRV-12135

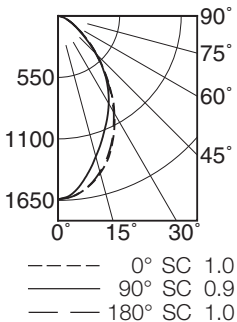
DUE TO OUR CONTINUING EFFORT TO IMPROVE PRODUCTS, TECHNICAL INFORMATION IS SUBJECT TO CHANGE WITHOUT NOTICE.

Alzak® is a registered trademark of ALCOA.

Detailed Photometry - Installed Fixture

Photometry from I.T.L., Boulder, CO

FRV-12135 (1 PL-H 85)



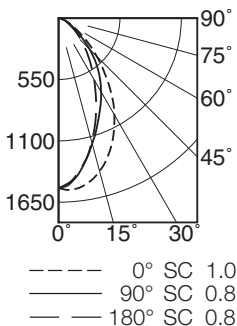
EFFICIENCY : 38.3%

CANDLEPOWER DISTRIBUTION					
	0.0	45.0	90.0	135.0	180.0
0	1640	1640	1640	1640	1640
5	1616	1606	1586	1598	1616
15	1456	1371	1302	1356	1445
25	1175	1098	1031	1071	1163
35	821	816	773	784	812
45	488	499	480	477	479
55	245	256	231	246	248
65	113	117	115	115	115
75	38	42	42	42	40
85	5	5	6	6	7
90	0	0	0	0	0

COEFFICIENTS OF UTILIZATION								
RF	20							
	RC	80			50			
		70	50	30	10	50	30	10
1	43	41	40	39	39	38	37	
2	40	37	35	34	35	34	33	
3	37	34	31	29	32	30	29	
4	35	31	28	26	29	27	25	
5	32	28	25	23	27	25	23	
6	30	26	23	21	25	22	21	
7	28	24	21	19	23	21	19	
8	27	22	19	17	21	19	17	
9	25	20	18	16	20	17	16	
10	24	19	16	15	19	16	15	

ITL TEST #56382 *LER=24.0 •AEC=\$9.99

FRV-12135 (1 PL-H 60)



EFFICIENCY : 48.4%

CANDLEPOWER DISTRIBUTION					
	0.0	45.0	90.0	135.0	180.0
0	1524	1524	1524	1524	1524
5	1540	1516	1464	1441	1453
15	1420	1300	1164	1117	1147
25	1162	1032	884	800	794
35	823	770	642	551	503
45	484	473	393	324	295
55	237	239	188	173	156
65	106	107	92	82	79
75	33	35	34	29	27
85	2	4	4	4	4
90	0	0	0	0	0

COEFFICIENTS OF UTILIZATION								
RF	20							
	RC	80			50			
		70	50	30	10	50	30	10
1	54	52	51	49	49	48	47	
2	50	47	45	43	45	43	41	
3	47	43	40	37	41	38	36	
4	44	39	36	33	37	35	33	
5	41	36	32	30	34	31	29	
6	38	33	29	27	32	29	26	
7	36	30	27	24	29	26	24	
8	34	28	25	22	27	24	22	
9	32	26	23	21	26	23	20	
10	30	25	21	19	24	21	19	

ITL TEST #56383 *LER=24.5 •AEC=\$9.81

* LER = Luminaire Efficiency Rating
LER = Luminaire Efficacy x Total Lamp Lumens x Ballast Factor
Input Watts

• AEC = Annual Energy Cost per 1000 lumens
(based on 3000 hours use @ \$0.08 KWH).

LIMITED WARRANTY: CATALOGED KIRLIN FIXTURES ARE WARRANTED FREE OF DEFECTS IN WORKMANSHIP OR MATERIAL FOR THREE YEARS FROM DATE OF PURCHASE. INSTALLATION, TONING, OR INNORMAL USE. Manufacturer at his option will replace or repair such fixture or refund the purchase price upon presentation of proof of purchase and defective fixture. The fixture of manufacturer within the first year of original shipment. Liability of manufacturer is limited to that original shipment. Manufacturer shall not be liable for any other damages, direct or indirect, sustained or suffered by purchaser or any person. This warranty is supplied to the buyer in place of all other warranties, expressed or implied. Seller does not warrant as to merchantability or fitness for particular use, nor will any oral statement constitute a warranty or attend this specific warranty. Abnormal use, abuse of the fixture, improper installation, or repair, or modification of the fixture without prior written authorization from the manufacturer will render the warranty void.

Options

Ballast, Wattage and Voltage

- 39 Installed electronic dimming ballast. Indoor use only. 10°C (50°F) minimum start. Please specify wattage and voltage. CONSULT FACTORY FOR AVAILABILITY.
- 73 Internal emergency battery pack for 60W PL-H lamp maximum (675 lumen output). Test switch and indicator light mounted in reflector. Ambient temp. limits: 0° to 55°C (32° to 131°F). Specify input voltage. Consult factory for 85W.
- 75 Remote emergency battery pack for 60W PL-H lamp maximum (675 lumen output). With test

- switch and indicator light. Ambient temp. limits: 0° to 55°C (32° to 131°F). Specify voltage. Consult factory for 85W. Use this option for outdoor emergency applications, where pack is remote mounted indoors in a heated space. Maintain a maximum distance of 2 feet between emergency pack and lamp.
- 97 Specify other voltage. Consult factory.
- 98 347 volt, 50/60 Hz. input. Consult factory.

Lenses and Trims

- 32 White oversize trim ring. Specify O.D.
- 40 White tamperproof flare trim. (CP x 1.10)
- 45 Gasket between ceiling and trim flange.

- 46 Gasket between trim and lens.
- 79 Extension collar for ceilings up to 2" thick.
- 94 Custom color/finish. Specify. Consult factory.
- CF High temperature color filter. Specify color.
- UV UV filter. Consult factory.

Other

- 99 Special modification. Consult factory.
- FS Additional in-line fuse.
- LE With 4-pin electronic lamp. 3000°K standard or specify 4100°K. 82 CRI and 20,000 hour life. Specify wattage and color temperature.

SUBMITTAL DATA

JOB NAME
TYPE
WATTAGE
CATALOG NUMBER

VOLTAGE

APPROVAL STAMP