

CATALOG #	TYPE	
JOB NAME	WATTAGE	VOLTAGE

6" x 11" 2 Triple 42 WATT MAXIMUM

FRT-06094

2 x 42

Open Appearance Rectangular

THIS PRODUCT IS NO LONGER AVAILABLE

Features

Lamp

- Designed for two 4-pin triple tube compact fluorescent lamps: 42/32/26W triple or 26W quad.

Ballast: Multi Wattage/Voltage

- Installed electronic high power factor, thermally protected. For lower wattages: Option -43.
- 120-277 multi-volt; 50/60 Hz. THD < 10%.
- ClickQuick connectors for easy service.
- Single circuit wiring or see Option -8.
- Cold weather -22°F (-30°C).
- End of lamp life protection circuit. HFL filter.
- Internally fused. Also see Options -FS, -FD.

Reflectors

- Upper: Spectular Alzak® aluminum.
- Lower: Clear SofTex aluminum, or other.
- See Options for other finishes.
- MicroLux tempered microprism lenses mounted above the lamps.

Aluminum Housing

- Aluminum housing. Finish: Excellent 1000 hour.
- Anti-rust 5% salt spray test.
- Light weight construction. S.O.D. load.
- Double operation: Intense compact fluorescent.
- Entire luminaire serviced through aperture.
- Built-in plaster frame.

Outlet Box

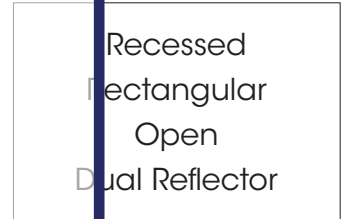
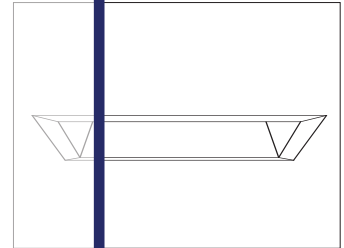
- Wired 14 GA (NEC) galvanized steel, UL listed: 1/2" and 3/4" knockouts.
- 27" galvanized hanger bars with adjustable mounting brackets (2) supplied.

Accessories: Infrared remote control receiver options.

- UL, E-UL and dimming.
- UL, E-UL and dimming.
- UL, E-UL and dimming.
- Through-branch conductors (6 #12).

Three Year Limited Warranty

- UL, E-UL and dimming.
- UL, E-UL and dimming.
- UL, E-UL and dimming.
- UL, E-UL and dimming.



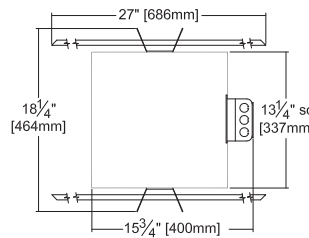
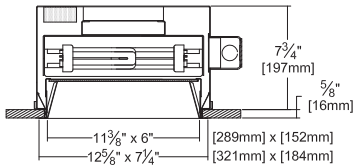
Selected Optional Trims:

- All White Option -30
- SofTex Titanium Option -57
- SofTex Dune Option -71
- SofTex Pewter Option -77
- SofTex Wheat Option -91

Please consult **QUOTATIONS** for the best alternative.

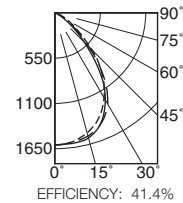
Performance at a Glance

FRT-06094



Ceiling Cut-out
6 3/4" x 12 1/8"

FRT-06094 (2 Triple 42W)



Cone of Light*

Dist.	FC	Dia.
6	44.5	7.0
8	25.0	9.3
10	16.0	11.6
12	11.1	14.0
14	8.2	16.3
16	6.3	18.6
---	0° SC	1.1
---	45° SC	1.1
---	90° SC	1.1

EFFICIENCY: 41.4%

Cone of Light Key

- Ft. Distance from fixture
- FC Footcandles (average)
- Dia. Circle of light at 50% of FC
- * Dia. (in ft.) shown is where FC value is half the FC at nadir.

THE KIRLIN COMPANY

3401 EAST JEFFERSON AVENUE • DETROIT, MICHIGAN 48207-4232
(313) 259-6400 • Fax: (313) 259-9409 OR (313) 259-3121 • www.kirlinlighting.com

RENAISSANCE SERIES
COMPACT FLUORESCENT LIGHTING

MAXIMUM WATTAGE

2 Triple 42

CATALOG NUMBER

FRT-06094

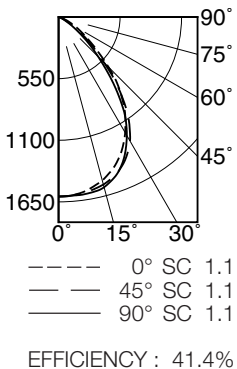
DUE TO OUR CONTINUING EFFORT TO IMPROVE PRODUCTS, TECHNICAL INFORMATION IS SUBJECT TO CHANGE WITHOUT NOTICE.

Alzak® is a registered trademark of ALCOA.

Detailed Photometry - Installed Fixture

Photometry from I.T.L., Boulder, CO

FRT-06094 (2 Triple 42)



CANDLEPOWER DISTRIBUTION					
	0.0	22.5	45.0	67.5	90.0
0	1602	1602	1602	1602	1602
5	1593	1593	1594	1597	1599
15	1510	1525	1548	1571	1573
25	1328	1376	1408	1405	1386
35	1035	1094	1086	1050	1015
45	632	659	575	551	503
55	283	269	230	203	177
65	106	91	61	47	41
75	22	18	12	11	10
85	2	2	2	2	2
90	0	0	0	0	0

COEFFICIENTS OF UTILIZATION							
RF	20						
	80			50			
RC	70	50	30	10	50	30	10
RW							
1	46	45	44	43	42	41	41
2	43	41	39	37	39	37	36
3	40	37	35	33	35	33	32
4	38	34	31	29	32	30	28
5	35	31	28	26	30	27	25
6	33	29	25	23	27	25	23
7	31	26	23	21	25	23	21
8	29	24	21	19	24	21	19
9	27	23	20	18	22	19	18
10	26	21	18	16	20	18	16

ITL TEST #55419 *LER=32.4 •AEC=\$7.40

* LER = Luminaire Efficiency Rating

LER = $\frac{\text{Luminaire Effic.} \times \text{Total Lamp Lumens} \times \text{Ballast Factor}}{\text{Input Watts}}$

• AEC = Annual Energy Cost per 1000 lumens (based on 3000 hours use @ \$0.08 KWH).

Options

Wattage and Voltage

- 39 Installed electronic dimming ballast. Indoor use. 10°C (50°F) minimum start. Specify wattage, voltage and brand.
- 43 Lower wattage: for either 4-pin electronic 2x18W triple/quad or 2x13W quad (only). Specify wattage.
- 84 Wired for two circuits. Also see -FD.
- 97 Specify other voltage. Consult factory.
- 98 347 volt, 50/60 Hz. input. Consult factory.

Emergency Ballast - Specify Voltage¹

Internal (factory installed) ballast, test switch and indicator light. Suitable for damp locations from 0° to 50°C (32° to 122°F) or with Cold Weather

- version (see -CE) -20° to 55°C (-4° to 131°F).
- 73 Internal 1-lamp EM ballast. Specify voltage.
- CE Internal cold weather (-20° to 55°C) 1-lamp EM ballast. Specify voltage.
- HE¹ Internal higher lumen (up to 1250) 1-lamp EM ballast. 13-42W only. Specify voltage.

Lenses and Trims

- 30 All white lower trim. (CP x .95)
- 31 White acrylic enameled lower trim flange.
- 32 White oversize trim extender. Specify size.
- 45 Gasket between ceiling and trim flange.
- 57 SofTex Titanium lower trim. (CP x .80)
- 71 SofTex Dune lower trim. (CP x .88)
- 77 SofTex Pewter lower trim. (CP x .85)
- 79 Extension collar for ceilings up to 2" thick.

- 90 SofTex Champagne Gold lower trim. (CP x .91)
- 91 SofTex Wheat lower trim. (CP x .87)
- 94 Custom color/finish. Specify. Consult factory.

Other

- 99 Special modification. Consult factory.
- FD Two additional in-line fuses. One per ballast. Use with Option -84. Not available with Option -98 (347V).
- FS Additional in-line fuse. Not available with Option -98 (347V).
- LE With 4-pin electronic lamp. 3500°K standard. 82 CRI and 12,000 hour life. Specify wattage, style and color temperature.

¹ Visit www.kirlinlighting.com for most current performance / specifications.

SUBMITTAL DATA

JOB NAME

TYPE

WATTAGE

VOLTAGE

CATALOG NUMBER

APPROVAL STAMP

LIMITED WARRANTY: CATALOGED KIRLIN FIXTURES ARE WARRANTED FREE OF DEFECTS IN WORKMANSHIP OR MATERIAL FOR THREE YEARS FROM DATE OF PURCHASE. INSTALLLED TO N.E.C. IN NORMAL USE. Manufacturer at his option will replace or repair such fixture or refund the purchase price on presentation of proof of defect in workmanship or material within three years of original shipment. Liability of manufacturer is limited to the foregoing, and manufacturer shall not be liable for any other damages, direct or indirect, sustained or suffered by purchaser or any person. This warranty is supplied to the buyer in place of all other warranties, expressed or implied. Seller does not warrant as to merchantability or fitness for a particular use, nor will any oral statement constitute a warranty or amend this specific warranty. Abnormal use, abuse of the fixture, improper installation, repair, or modification of the fixture without prior written authorization from the manufacturer will render the warranty void.